

# Saliva Sample Collection Instructions



Saliva Collection  
Tube



Saliva Straw



Alcohol Wipe

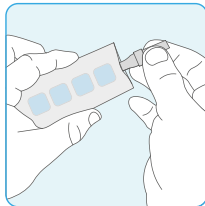


Tube Bag

Do not eat, drink, smoke, chew gum, or brush your teeth at least 30 minutes prior to providing your sample.

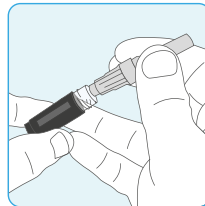
Do not use mouthwash for at least 2 hours prior to providing your sample

## How to Collect Sample:



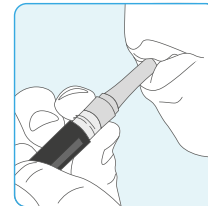
### Step 1

Open saliva straw pouch and remove saliva straw.



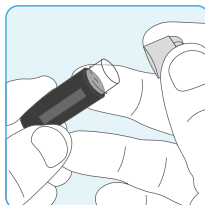
### Step 2

Unscrew tube cap and insert ridged end of saliva straw into tube.



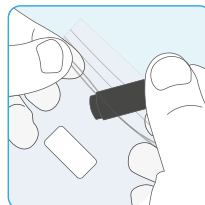
### Step 3

Pool saliva in mouth and push saliva through straw into tube until half full.



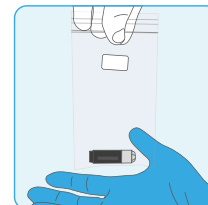
### Step 4

Remove and discard saliva straw and securely cap tube.



### Step 5

Wipe tube with alcohol wipe, place into tube bag and seal.



### Step 6

Return tube to sample collection manager.